



## HOTELS & HOSPITALITY

| Hong Kong Convention & Exhibition Centre Wanchai | May 7, 2015 (Thursday) | 9:00 - 18:00 | [Register Now](#)

### SPECIAL OFFER:

Register for **Integrate** 2015 and take away a FREE ticket# for Datacenter Dynamic Converged HK valued up to US\$595



### Speakers' Spotlight – Ms. Joyce Lau & Ir Erol Wong



#### Ms. Joyce Lau

Sales Director, Kimberly Clark Professional Hong Kong and Macau

Joyce Lau, Sales Director of Kimberly Clark Professional Hong Kong and Macau, has been in consumables industry for institutional market for over 15 years. Offering consultative advice to business partners of various corporations in the area of continuous improvement in achieving their business objectives is her profession. She and her team are experienced in managing projects to achieve the desired sustainability objectives of various business partners in the perspectives of product life cycles. To add value to their business partners, she and her team always collect relevant best practices from operations around the globe and share back to major end-users to drive excellence in operations and synergy. [read more](#)



#### Ir Erol Wong

Director of Engineering, Regal Hongkong Hotel

Erol had completed the Bachelor degree in Building Services Engineering in the City University of Hong Kong. He had completed formal training in Laws – HKU SPACE, Safety – HKPU, Financial planning – HKPU MEDC. Prior to joining the hotel industry in 1990, he got experience in Building Services design (Meinhardt Consulting Engineers) and installation (Shinryo Corporation). He is currently employed by the Regal Hongkong Hotel as Director of Engineering. He started his research works in energy saving solution in 2004. He had published paper in The Hong Kong Institution of Engineers with the topic "Energy Portfolio Management and Optimization". The technical presentation was held on 22 March 2013 (The HKIE CAD Symposium 2012-2013). [read more](#)

### OTHER SPEAKERS & PANELISTS

<b>Alfred Sit</b> Deputy Director, the Electrical & Mechanical Services Department, HKSAR	<b>Alain Tang</b> Vice President, The GEES Group	<b>Colin Chung</b> Managing Director, Sustainable Development & Environment Group, China Region, Parsons Brinckerhoff (Asia)	<b>Daniel Kalutkiewicz</b> Solution Architect, IBM China/Hong Kong Limited	<b>Douglas Woodring</b> Founder, Ocean Recovery Alliance
<b>James Lu</b> Executive Director, Hong Kong Hotels Association	<b>Joseph Lai</b> Associate Professor, The Hong Kong Polytechnic University	<b>Nicola Anklin</b> Director of Workplace Experience - Asia Pacific, JLL	<b>Nicholas Mak</b> Associate, EC Harris (Hong Kong) Ltd	<b>William Yu</b> Chief Executive Officer, World Green Organisation

### EDUCATIONAL SESSIONS

The 9 educational sessions will bring you the hottest topics on hotels & hospitality, including new hotel development in Hong Kong and the changing scene of the hotel industry, hotel conversion, Internet of Things (IoT), hotel facilities management, customer service comparison between hotels & hospitality and facilities management, sustainability consumable solutions, latest technology in energy saving, food waste management, plastic disclosure project and ecosystem in Hong Kong. Sessions will be followed by interactive discussion panels with speakers and panelists.

### PROGRAMME AT A GLANCE\*

8:30 – 9:00	Registration/ Tea & Coffee
<b>WELCOME ADDRESS AND OPENING KEYNOTE</b>	
9:00 – 9:10	Welcome Address
9:10 – 9:30	Opening Keynote Ir Alfred Sit, Deputy Director, Electrical & Mechanical Services Department of the HKSAR Government
9:30 – 9:50	Opening Keynote Mr. James Lu, Executive Director, Hong Kong Hotels Association
9:50 – 10:00	Souvenir Presentation
<b>MORNING SESSION</b>	
10:00 - 10:40	Educational Session 1 - 2
10:40 - 11:10	Morning Break
11:10 - 11:30	Educational Session 3
11:30 - 12:30	Panel Discussion with Speakers and Panelists
12:30– 14:00	Networking Lunch
<b>AFTERNOON SESSION</b>	
14:00- 14:10	Souvenir Presentation
14:10 - 15:30	Educational Session 4 - 7
15:30 - 15:55	Afternoon Break
15:55 - 16:35	Educational Session 8 - 9
16:35 - 17:35	Panel Discussion with Speakers and Panelists
17:35 - 18:50	Student Competition Awards Presentation
17:50 - 18:00	Closing
18:00	Coach to Annual Dinner
18:30 - 19:30	Post-Conference Cocktail
19:30 - 22:00	IFMA 23rd Anniversary Annual Dinner at Hong Kong Jockey Club

### PRE- & POST- CONFERENCE EVENTS\*

- 11 Apr, 2015 Guided Tour : Aquaponic System ([Event Photos](#))
- 18 Apr, 2015 Student Competition : Project Presentation
- 8 May, 2015 Guided Tour : Towngas Green Kitchen ([Register Now](#))
- 23 May, 2015 Guided Tour : Biodiesel Facilities in Hong Kong ([Register Now](#))
- 27 Jun, 2015 Junk Trip : On the Water with Ocean Recovery Alliance
- ... Open for Event Sponsors. Limited packages available. Book now.

### POST-CONFERENCE EVENT : Biodiesel Facilities in Hong Kong

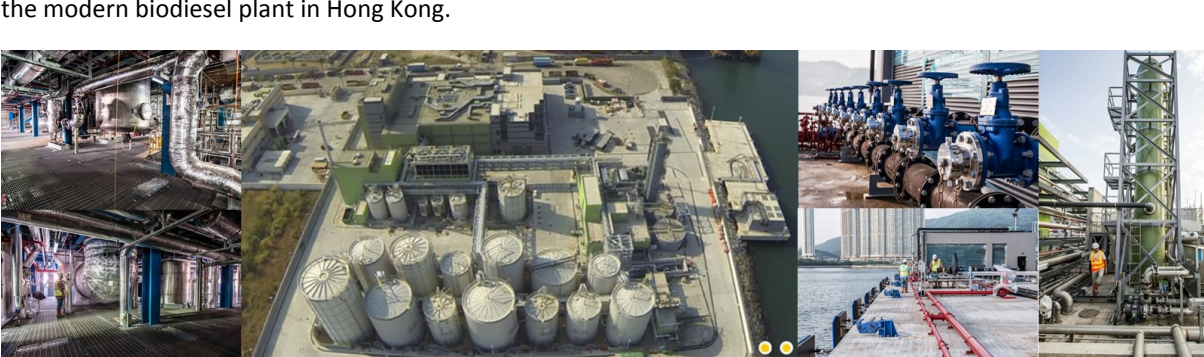
Saturday, May 23, 10:00 - 12:00

[Register Now](#)

Biodiesel is a clean, low-carbon transport fuel that can be used as a substitute for fossil diesel, or blended with fossil diesel in diesel engines without modification.

ASB Biodiesel operates a biodiesel factory in Hong Kong with the capacity to produce 100,000 tons of low-carbon transport fuel per year. ASB Biodiesel's product is produced from waste. Therefore, it does not lead to land use changes. It also produces significantly lower greenhouse gas emissions because it avoids the upstream carbon emissions associated with crop production and seed oil extraction.

By visiting the ASB Biodiesel Plant, participants can have a better understanding about the daily operation of the modern biodiesel plant in Hong Kong.



### SPONSORSHIP & ADVERTISING OPPORTUNITIES

IFMA Integrate is a terrific opportunity for organizations to raise their profile with the industry's leading professionals and decision makers. Only a few sponsorship and advertising packages are available. Call (852) 2512 0111 or e-mail: [integrate@ifma.org.hk](mailto:integrate@ifma.org.hk) for reservations now.

<b>GOLD SPONSORS</b>							
<b>SILVER SPONSORS</b>							
<b>BRONZE SPONSOR</b>							
<b>VENUE SPONSOR</b>		<b>JOINT PROMOTION PARTNER</b>		<b>EDUCATION PARTNER</b>		<b>MEDIA PARTNER</b>	

**SUPPORTING ORGANIZATIONS**


# FREE ticket is subject to approval by DCD, first-come first-served.

\* Conference program and events are subject to change